

Repair Movies - mechanical -



*Xperia™ Z5
Premium
E6853*

*Xperia™ Z5
Premium Dual
E6833, E6883*

CONTENTS

1	Movies	3
1.1	Disassembly	3
1.2	Reassembly	4
2	Revision History	5

To view the embedded repair movies in this document, Acrobat Reader version 8 (or later) and Flash Player version 8 (or later) must be installed on your computer.

For best picture quality, select “Actual size” or “100%” as zoom level in Acrobat Reader. To magnify while keeping an acceptable picture quality, increase the zoom level to 200%.

If the movies appear to be jerky or blurred when viewing on-line, this is probably caused by the connection speed being too slow. In that case, right-click with the mouse on the document name and select Save Target As to download the repair movie document for off-line viewing.

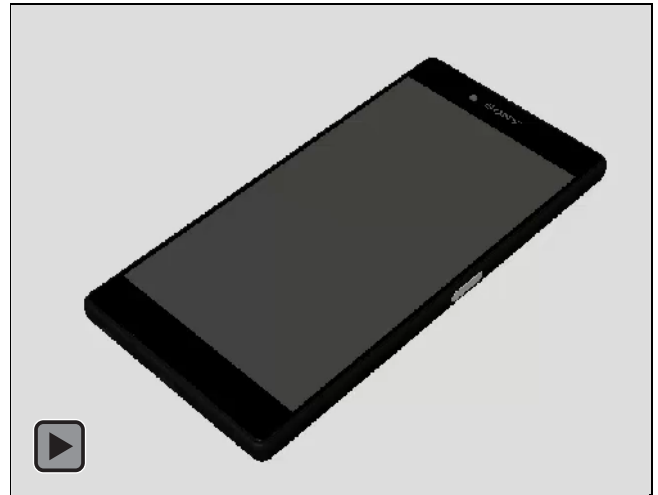
For general information about repair movies, refer to 1220-1333: Generic Repair Manual - mechanical

The movie is based on using E6853 model, the design differences between E6853 and E6833/E6883 are minor, therefore please refer to the Working Instruction for detailed instruction.

1 Movies

1.1 Disassembly

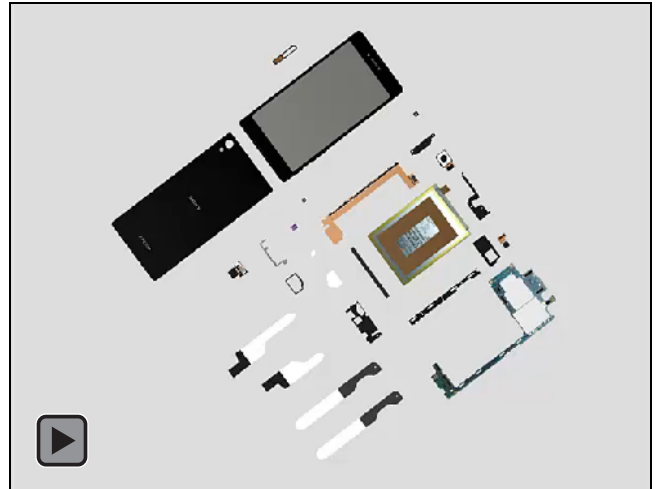
- Tray Combo SS (E6853)/ Tray Combo DS (E6833/E6883)
- Adhesive Battery Rear (a) and Panel Rear Sub Assy (b)
- Main Camera
- Ant WLAN
- Ant Cellular Sub
- Chat Camera
- Holder Battery
- Holder USB
- Main PBA
- Thermal Gap Filler
- Adhesive 2nd Mic
- Adhesive 1st Mic
- Plate Speaker
- Plate Vib
- Adhesive FPC Speaker
- Holder Vibrator
- Ant Cellular Main
- Cushion Battery Bottom
- FPC USB Module
- Adhesive Battery A and Adhesive Battery
- Battery
- FPC Key Module
- Fingerprint Sensor Module (a) and Display Frame Assy (b)



Movies

1.2 Reassembly

- Display Frame Assy (a) and Fingerprint Sensor Module (b)
- FPC Key Module
- FPC USB Module
- Ant Cellular Main
- Holder Vibrator
- Adhesive FPC Speaker
- Plate Vib
- Plate Speaker
- Adhesive 1st Mic
- Adhesive 2nd Mic
- Thermal Gap Filler
- Main PBA
- Holder USB
- Holder Battery
- Cushion Battery Bottom
- Adhesive Battery A and Adhesive Battery B
- Battery
- Chat Camera
- Ant Cellular Sub
- Ant WLAN
- Main Camera
- Adhesive Battery Rear (a) and Panel Rear Sub Assy (b)
- Tray Combo SS (E6853)/ Tray Combo DS (E6833/E6883)



2 Revision History

Rev.	Date	Changes / Comments
1	2015-Otc-18	Initial release
2	2015-Nov-02	Updated reassembly movie